



# *The View*

*Foothills Land Conservancy's  
2019 Spring Newsletter & 2018 Annual Report*

*Cover Photo - One of many outstanding waterfalls located at a recently preserved 310 acre property in Grundy County, TN.*

# The View

## FLC's 2019 Spring Newsletter & 2018 Annual Report



**www.foothillsland.org**

3402 Andy Harris Road • Rockford, TN 37853

865-681-8326 • [info@foothillsland.org](mailto:info@foothillsland.org)

*Mission - FLC is dedicated to promoting, protecting, and enhancing the lands and environment of the Southern Appalachian region and promoting the character of the land for the general public, now and in the future.*

### 2019 FLC BOARD OF DIRECTORS

Dan Barnett, Vice President

Sherry Browder

Ed Caudill

Madge Cleveland, President

Jenny Hines, Treasurer

Mark Jendrek

Spencer Hall

David Long

Kelly Love Manning

Billy Minser

Mike Parish

Steve Polte

John Proffitt

Sara Fortune Rose

John Wilbanks

David Zandstra

*\*A special thank you to departing FLC Board*

*Members, Dr. Craig Jarvis and Mark King*

### 2019 FLC PROPERTIES FOUNDATION

Steve Arnett

Madge Cleveland

Spencer Hall

Mark Jendrek

Mark King

Sara Fortune Rose

Robert Van Hook, President

### FLC STAFF

Bill Clabough, Executive Director

Elise Eustace, Communications & Dev. Dir.

Matthew Moore, Biologist

Shelby Lyn Sanders, Biologist

Glenna Strissel, Accountant

### A Letter from FLC's Board President

Dear Friends of the Foothills,

#### 2018 was another record year for FLC!

The Conservancy completed a record number 51 land preservation projects within 21 Tennessee counties and the five additional states of Alabama, Georgia, Kentucky, North Carolina and Virginia. Here are a few highlights!



- FLC's 51 land projects totaled approximately 18,000 acres, joining over an additional 100,000 cumulative acres FLC has assisted in preserving since the organization's beginnings in 1985.
- Three of FLC's 2018 land preservation projects are noted by the Tennessee Department of Environment & Conservation's Division of Archeology to have two Trail of Tears routes within the property boundaries. All three of these land partnerships are located in both Sequatchie and Van Buren Counties with one of them also being located in Warren County, TN.
- We are also pleased to announce that FLC has placed a conservation easement on a 1,000 acre Roane County tract, known as the Fourman property, earlier this year. Foothills has also recently donated the tract to the State of Tennessee for inclusion in the Mount Roosevelt State Wildlife Management Area. You can read more about this project on page 4.

On behalf of FLC's Board of Directors and staff, we are enormously appreciative for the 300 acre working farm in the Blount County community of Rockford, TN, that has housed our organization's office headquarters since May of 2017. Thanks to FLC's Founding Board President and conservation landowner, Gail Harris, for the donation of her farm to the Conservancy, ensuring that our organization has a permanent home to carry out our mission and programs.

In addition to our land preservation efforts, the Foothills team continues our focus on building a permanent endowment to support FLC's land acquisition projects, stewardship programs, and other future conservation partnership opportunities. The FLC Properties Foundation, a supporting organization for FLC, is assisting with these efforts.

2019 is also shaping up to become another record year for our land preservation efforts and we look forward to keeping you apprised of our projects and programs throughout the year. We are also looking forward to seeing you at our Annual Summer Celebration on Saturday, August 24, 2019. Our event location will once again be the beautiful and scenic RiverView Family Farm.

Thank you for being a valued Friend of the Foothills!

- Madge Cleveland, FLC Board President

# Letter from the Director

Hello Friends,

2018 was yet another record year for FLC's land preservation efforts! We worked with land owners to partner on a record 48 conservation easement projects and 3 land donations totaling close to 18,000 acres! The organization now has over 300 land preservation partnerships and has assisted in over 124,000 regional acres being preserved. This cumulative number includes conservation easement partnerships, fee simple properties, and additional land projects that FLC was involved in since the organization's beginnings in 1985.

Here is a brief overview of where these 51 land preservation projects in 2018 occurred:

- **TENNESSEE** - 26 land preservation projects and 1 fee simple donation totaling 11,844 acres within the 21 counties of Blount, Grundy, Hamilton, Hardin, Humphreys, Lake, Loudon, Monroe, Morgan, Overton, Putnam, Rhea, Roane, Robertson, Scott, Sequatchie, Sevier, Sumner, Van Buren, Warren, and White
- **ALABAMA** - 10 land preservation projects and 1 fee simple donation totaling 3,743 acres in the 8 counties of Cherokee, Coosa, Etowah, Jefferson, Lowndes, Macon, Montgomery, and Tallapoosa
- **GEORGIA** - 7 land preservation projects and 1 fee simple donation totaling 1,628 acres in the 8 counties of Catoosa, Elbert, Floyd, Jefferson, Lumpkin, Meriwether, Murray, and Taylor
- **NORTH CAROLINA** - 1 land preservation project totaling 112 acres in Chatham County
- **SOUTH CAROLINA** - 2 land preservation projects totaling 210 acres in the counties of Anderson and Richland
- **VIRGINIA** - 2 land preservation projects totaling 471 acres in Chesterfield County

You can learn more about our 2018 land project highlights beginning on the next page. For more information about FLC's other land preservation projects, visit FLC's website, [www.foothillsland.org](http://www.foothillsland.org).

Please know that our door is always open to our Friends. We welcome your ideas, feedback and resources to help fulfill our mission of promoting, protecting and enhancing the lands of the Southern Appalachian region. Feel free to contact us to request a presentation for your club, organization or group.

Foothills is poised to have another amazing year and we couldn't have come this far without the ongoing and generous support of our Friends! Thank you for your time, resources and contributions to our organization, helping us expand our reach across the region! We look forward to seeing you at this year's Summer Celebration on Saturday, August 24th!

- Bill Clabough, FLC Executive Director



FLC Executive Director, Bill Clabough, walks along the edge of the Mississippi River while visiting a property in Lake County, Tennessee.



## What does a Land Trust Do?

FLC staff recently hosted 6th graders from the nearby Clayton Bradley Academy. The students asked great questions and learned about how a land trust, like FLC, works with the community to preserve natural areas.



## In this issue...

2018 Conservation Projects	Pages 4-11
FLC's Summer Celebration	Page 12
Giving Thanks for our Friends!	Page 13-15
In Memory Of/In Honor Of	Page 15
Become a Friend of FLC!	Page 15
Connect to Foothills	Back Page

# FLC's 2018 Land Conservation Projects

In 2018, the Foothills staff completed a record 51 land preservation land partnerships totaling close to 18,000 acres within the states of Tennessee, Alabama, Georgia, North Carolina, South Carolina and Virginia. These next few pages provide a few highlights of these diverse and scenic projects.

There are several options for a landowner to preserve or donate their property. FLC primarily works with two popular land preservation methods - conservation easement agreements and fee simple donations. Both are referred to over the following pages.

- A conservation easement agreement is a voluntary, customizable legal document between a land trust and a landowner that specifies what can and cannot take place on the property 'in perpetuity', or forever. Both parties work together to ensure the landowners wishes are included, covering allowable land uses including agriculture, as well as prohibited activities on the property, like commercial or residential development. When landowners donate a conservation easement they maintain ownership and management of their land and can sell or pass the land on to their heirs while foregoing future development rights. They can also decide to bequeath the land to private or public entities.
- With a fee simple land donation the landowner grants all property rights, title and interest to the land trust. The land trust owns and manages the land.

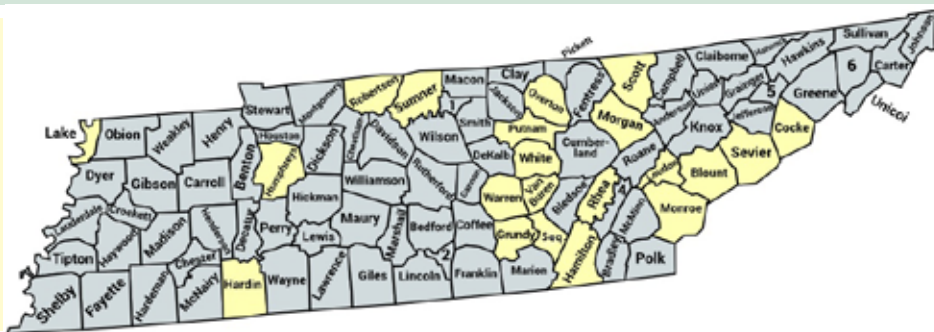
For more information about land preservation options, visit [www.foothillsland.org](http://www.foothillsland.org) and click on the 'Landowners' page or call FLC at 865-681-8326.



FLC staff observe the diverse, natural features of an 162 acre property in Grundy County, TN.

## Project highlights from properties in Tennessee!

In 2018, FLC staff completed 26 land preservation projects and 1 land donation totaling 11,844 acres and across 21 Tennessee Counties.



### EAST TENNESSEE REGION

(Counties: Blount, Cocke, Hamilton, Loudon, Monroe, Morgan, Rhea, Roane, Scott, and Sevier)

#### Cocke County, TN - 295 acre fee simple donation

Located at the confluence of the Nolichucky and French Broad rivers, this 295 acre tract includes a rich river bottom, woodlands, and approximately 1.2 miles of river frontage on the two rivers. The tract (pictured right and outlined in blue) almost became a subdivision but is now well established shorebird habitat. The land is located directly across the river from the Rankin Wildlife Management Area (Rankin WMA), an area known as the premier birding location in the region for warm season waterbirds. According to the Tennessee Wildlife Resources Agency there are at least three active Osprey nests within the Rankin WMA and several others nearby. Bald Eagles appear regularly in the area. eBird hotspot data indicates that at least 221 avian species have been seen at Rankin Bottoms. Along the tidal mudflat area of the WMA Neotropical migrants such as the Prothonotary Warbler, Willow Flycatcher, and several species of vireo are known to breed and nest. These same neotropical migrants could certainly be expected to use the adjacent habitat available on the property.



Image - Confluence of the Nolichucky & French Broad Rivers in Cocke County, TN.

#### UPDATE - Roane County | 1,000 acre land donation to FLC!

Back in 2017, Foothills Land Conservancy received a 1,000 acre in Roane County, donated by Don Fourman. This beautiful property offers creeks, woodlands, and scenic views along with a unique history. One of the tract's borders adjoins the 11,000 acre Mount Roosevelt State Wildlife Management Area (WMA).

In 2019, FLC placed a conservation easement on the property and conveyed the tract to the State of Tennessee. The Tennessee Wildlife Resources Agency plans to manage and steward the property as part of the adjacent Mount Roosevelt State WMA. The property is being preserved for its scenic open space forest, escarpment outcrops, waterways, and wildlife habitat. Other natural areas nearby include: White's Creek Gorge, Ozone Falls State Natural Area, Piney Falls SNA, and Stinging Fork Falls Pocket Wilderness. In addition, other nearby private easements held or co-held by FLC include approximately 2,745 acres in Roane County.



4 Roane County, TN | 1,000 acres (Image of Piney Creek)

## EAST TENNESSEE REGION continued...



*Blount County, TN | 27 acres - TN Century Farm*

This property is being preserved for its scenic open space which offer views to and from Chilhowee Mountain and its prime agricultural soils. The expansive pastures on the tract are important in terms of supporting grassland-obligate bird species such as the Grasshopper Sparrow, Eastern Meadowlark and Dickcissel, which were observed on the property. The working farm is designated as a TN Century Farm, an honor that recognizes the dedication and contributions of families who have owned and farmed the land for at least 100 years.



*Hamilton County, TN | 61 acres - wooded tract*

Located in the northern section of Hamilton County, this property is less than 500 yards from the shoreline of Chickamauga Lake and is mostly wooded. The property is being preserved for its open space forest, natural habitat, and for its public benefit as an aesthetic buffer amid increasing development pressures. This tract also serves as an important ecological role as a buffer to several state-protected lands in the immediate area, including Hiwassee Wildlife Refuge and Chickamauga Wildlife Mgmt. Area.



*Loudon County, TN | 2 projects totaling 506 acres*

One of two tracts in Loudon County (pictured above) is being preserved for its open-space pastures, natural habitat, and for its public benefit as an aesthetic buffer amid increasing development. It also serves an important ecological role as a buffer to several protected lands in the immediate area, including over 3,000 acres by FLC easements within a 10 mile radius. The second tract is located along the Tennessee River and features over 3,000 feet of river frontage along a steep bluff. According to the National Wetlands Inventory there are portions of eight individually-delineated wetlands on the property.

### **Monroe County, TN - 1 project | 972 acres**

This property is within approximately 1,500 feet of the boundary for the Cherokee National Forest. Close to two-thirds of the slopes and ridges on this property, many of which are forested, can be seen from Cherokee National Forest. The tract is also close to the Tellico Lake Wildlife Management Area, which includes over 8,700 acres, as well as The Nature Conservancy's designated 'Forest Block' of Joyce Kilmer/Unicoi Mountains/Slick Rock. The property offers vast views of the surrounding Cane Creek and Ballplay Creek Valleys, Tellico River, and the Blue Ridge Mountains. There are 16,300 linear feet of perennial and intermittent streams on the tract and all drain ultimately into the Little Tennessee River and its impoundments, which in turn flow into the Tennessee River. The Tennessee River falls into the TN Freshwater Ecoregion, part of The Nature Conservancy's Freshwater Ecoregions of the World, which contains the highest number of endemic aquatic species in North America.



*Monroe County, TN | 972 acres - view of Cherokee National Forest*



*Morgan County, TN | 615 acres - entirely forested*

This property is located a few miles northeast of Harriman in southern Morgan County. The tract is entirely forested, predominantly by species associated with the Allegheny-Cumberland Dry Oak Forest. This property serves as an ecological buffer between nearby protected natural areas including Catoosa Wildlife Management Area and Lone Mountain State Forest.



*Rhea County, TN | 948 acres - Includes views of Seq. Valley*

This property consists of mostly oak forest stretched over 3 miles above and below the Cumberland Escarpment, northeast of Spring City. The richness and importance of the region's biodiversity is also attested to by the large number of preserved natural areas and conservation easements (CE's) within close proximity. The tract lies within 13 miles of over 13,000 acres of state natural areas. FLC CE's in Rhea and surrounding counties cover about 8,000 acres.



*Scott County, TN | 1,106 acres*

Located south of Huntsville, TN, this tract consists of upland forest, steep cove forest with some hemlock and pine forests. Former coal-mined areas are now dominated by shrubs, young trees and small wetlands. Preserving the property will protect scenic ridgelines, which rise nearly 1,300' from the valleys below. The tract is within several priority conservation areas including The Nature Conservancy's designated terrestrial area, the South Fork Cumberland River. (Pictured) A spotted salamander egg mass observed by FLC staff.

## MIDDLE TENNESSEE REGION

(Counties): Grundy, Humphreys, Overton, Putnam, Robertson, Sequatchie, Sumner, Van Buren, Warren, & White

### Grundy County - 3 projects | 806 acres

A portion of this 333 acre property is adjacent to the 15,590 acre Savage Gulf Class II Natural Scientific State Natural Area. This tract contains a small but significant forest known as a Cumberland Seepage Forest. This is a rare plant community, acknowledged by TDEC, and ranked rare to very rare in Tennessee. It is also recognized by the Tennessee Forestry Association as a plant community of concern in Tennessee. Plants characteristic of this habitat and observed on the property include, but are not limited to: Southern Swamp Dogwood, Southern Lady Fern, and Great Rhododendron. The Property proved quite diverse in total vascular plants. One hundred and sixty-eight species were found which included 29 tree species, 31 birds, 8 butterflies, 6 dragonflies and 2 mammals. Among the butterflies seen were about a dozen *Diana fritillaries*, a species ranked rare to uncommon in TN.

Two additional Grundy County projects total 472 acres. These adjacent properties are both located within the Cumberland Plateau. One of the property's smaller tracts descends from the Plateau into the Plateau Escarpment. During a site visit, staff determined the plant life at both tracts to be diverse with each property totaling over 195 plant species recorded. Of particular interest at both properties was a species of special concern, the American chestnut (*Castanea dentata*). American chestnut is a species of special concern due to its limited population size and inability to reach reproductive maturity due to the non-native chestnut blight.

### Humphreys County - 1 project | 240 acres (not pictured)

This beautiful property includes forested ridges, rock outcrops, diverse wildlife, stream habitats, as well as natural and open space forest. The tract is situated on a scenic creek near the Duck and Tennessee Rivers an hour from Nashville. There is a firmly established pattern of land preservation near the tract including the Tennessee National Wildlife Refuge (51,360 acres), Natchez Trace State Park, (10,154 acres), Montgomery Bell State Park (3,781 acres), and Mousetail Landing State Park (1,246 acres). Easements held by FLC or other land trusts within 20 miles of the property total 44,405 acres.

### Putnam & Overton Counties - 1 project | 1,067 acres

This property consists of cropland and pasture on its south half, and oak forest and mesic forest on its north half. A 50 acre lake is situated on within the southern portion of the property while a creek and three tributaries flow north and northeast out of the property. The tract's habitats support wintering and resident wildlife species including white-tailed deer, wild boar, ring-necked duck and sandhill crane, whose sign or presence were observed during an inventory of species in December 2018. A bald eagle that was observed hunting waterfowl over the lake. A manager of the farm says it is seen almost daily and occasionally with its mate.

### Robertson County - 1 project | 84 acres

This property features 3,000' of frontage along Honey Run Creek, a regionally-significant tributary to the South Fork Red River. Honey Run Creek was assessed as having scenic and natural qualities of regional significance and being a good fishery by the Tennessee Rivers Assessment Project, and was deemed 'Fully Supporting' by the Tennessee Stream Use Attainment.

### Sequatchie, Van Buren & Warren Counties - 3 properties | 1,884 acres

Three of FLC's 2018 land preservation projects are noted by the Tennessee Department of Environment & Conservation's Division of Archeology to have at least one Trail of Tears route within each of the tracts. All three properties are adjacent to each other and located in both Sequatchie and Van Buren Counties with one of them also being located in Warren County. These tracts are all being protected for the relatively natural habitat corridor for wildlife, wetlands, streams, bottomland forests and open space forests. The South Cumberland Recreation

Area is less than 5 mile away from these tracts.



Creek with Great rhododendron



*Diana fritillaries*



Southern Lady Fern

Grundy County, TN - 3 projects totaling 805 acres (pictured above and below)



American chestnut



One of many waterfalls on property



Eastern Box Turtle



Putnam & Overton Co. TN | 1,067 acres (50 acre lake hosts several bird species.)



Robertson County, TN | 84 acres



Seq./Van Buren/Warren | 1,883 acres

### Sequatchie County - 2 properties | 638 acres

This beautiful 104 acre property consists of upland forest and steep cove forest and is situated on over one half mile of the Cumberland Escarpment. It is located within several recognized priority conservation areas. The tract is being preserved for its scenic open space forest, the scenic views of its Plateau Escarpment from the Sequatchie Valley, the Cumberland Plateau Clifftop Sandstone Barren habitat, its proximity to karst habitat, and the protection of the relatively natural habitat corridor for wildlife. Another 534 acre property consists mostly of oak forest, mesic forest and pine plantation. The tract stretches 2.25 miles above and below the Cumberland Escarpment near Dunlap. This tract is being preserved for its scenic ridgeline, which is presented to the public from the Sequatchie Valley below, as well as for its natural habitat corridor and open space.



Sequatchie County, TN | 104 acres (View of Sequatchie Valley)

### Sumner County - 1 project | 572 acres

Roughly 25 miles northeast of Nashville, this property consists of forested ridges, limestone glades and rocky drains. Two intermittent streams drain the property directly to Station Camp Creek. This creek was assessed by the Tennessee Department of Environment and Conservation as having natural and scenic qualities of local significance, regional significance for recreational boating, and is considered an 'Excellent' fishery. A brief species list compiled during a staff site visit included 43 tree species and 82 other shrubs and herbs. A Belted Kingfisher was seen perching over one of the waterways on the property.



Sumner County, TN | 572 acres (One of two streams on property)

### Warren County - 1 project | 308 acres

This property includes ponds, waterfalls, and caves. The Collins River, designated as a 'scenic river' by the State of TN, runs along roughly 2,500 feet of the property. A portion of the tract includes pasture land and crop farming with 71 acres in woodlands. Forested bluffs along the river support the most unique plant community found on the property—fire-adapted glade-type species that thrive in thin soil and exposed rock substrates and can tolerate extreme conditions. One such species, believed to be a very recently described species, was found on the steep limestone bluff above the Collins River on the south side of the property. This species is found only on the Cumberland Plateau and closely adjacent sections of the Eastern Highland Rim.



Warren County, TN | 308 acres (Waterfall close to Collins River)

### White County - 1 project | 973 acres

Located south of Cookeville, TN, this property is within the Eastern Highland Rim and northwest of the Plateau Escarpment. The lower elevation fields include a working cattle farm with mature second growth forest in the rockier upper elevations. This land is being protected for the presence of karst habitats, water features, forested ridges and natural rock outcrops. (Right) A loggerhead shrike was observed on the property.



White County, TN



Lake County, TN | 600 acre working farm

## WEST TENNESSEE REGION

### Lake County - 1 project | 600 acres

This property consists mostly of farmland and is currently planted in soy beans (pictured left). The tract is located one mile from the Mississippi River. About 23 acres are in woodlands with a few intermittent streams and wetlands. Most of the woodlands are Mississippi Alluvial Forest, which is deemed a priority forest by the Tennessee State Wildlife Action Plan. During a visit staff encountered 42 species of plants, 15 birds, 12 butterflies and 3 dragonflies. The tract is in close proximity to Reelfoot Lake Wildlife Management Area and other state natural areas.

### Hardin County - 1 project | 200 acres

A site visit by staff determined the plant life to be very diverse with a total of 127 plant species recorded. The land is being preserved for its forested ridges, natural rock outcrops, open space forests, and water features. Also observed were six bird species recognized as priority species by the Appalachian Mountains Joint Venture, a coordinator of bird conservation plans. These species included the wood thrush, hooded warbler, yellow-breasted chat, scarlet tanager, summer tanager, and northern parula. The tract's ridges are adjacent to the Tennessee River, making it highly desirable for potential development. This land is located within 5 miles of Pickwick Landing State Park.

(Pictured clockwise on left - rocky outcrop, Oak leaf hydrangea, and Nettle chain fern)



Hardin County, TN | 200 acres





## Project highlights from properties in Alabama!

*In 2018, FLC staff completed 10 land preservation projects and 1 land donation totaling 3,743 acres in the 8 counties of Cherokee, Coosa, Etowah, Jefferson, Lowndes, Macon, Montgomery, and Tallapoosa.*

### **Cherokee County, AL | 2 projects totaling 1,479 acres**

**Project 1** - This 119 acre working farm, which includes a history of family farming spanning 5 generations, consists of mostly agricultural land. The tract includes ponds, riparian forest, and fallow land. Preservation of the tract also ensures the protection of mineral rights, habitat and forage for birds of prey and bobwhite quail, and open space. According to the

land owner, bald eagles and many hawk species feed on rodents on the property. Birds noted on site during the site visit include red-shouldered hawk, blue jay, American crow, eastern towhee, and northern bobwhite.

**Project 2** - FLC recently preserved a property totaling 1,360 acres on Lookout Mountain with a portion of the acreage on the Plateau Escarpment. The property is in close proximity to the Little River Canyon National Preserve. There are three headwaters, two streams, one pond, and numerous drains and depressions across the tracts. This fire-maintained landscape consists of natural rock outcrops, Plateau Escarpment, caves, dry forests, mesic forests, mostly open understories, roadside prairies, ponds, wetlands, creeks, depressions, and drains across Prime Agricultural Soils and Soils of Statewide Importance. All of these features contribute to a unique habitat ideal for diverse plant, mammal, insect, and bird species. During a visit, the FLC team determined the plant life to be very diverse with a total of 151 plant species recorded. Of these plants, 60 of those species were grasses or herbaceous plants. 36 tree species were identified, with ten of those species being oaks and two being hickories. Both oak and hickory provide high quality mast for local wildlife. (Pictured clockwise on right - rocky outcrop, Little brown jug, and Southern cricket frog)



Cherokee County, AL | 119 acre working farm



Cherokee County, AL | 1,360 acres

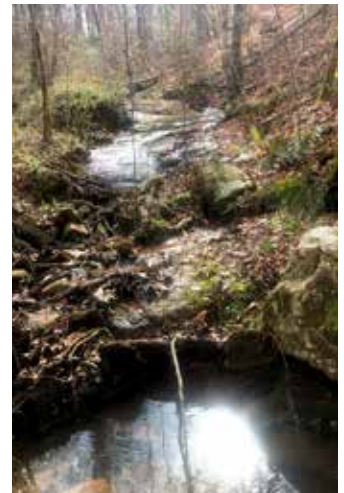


### **Coosa County, AL | 1 project and 1 fee simple totaling 150 acres**

Both properties are located off of Alabama Highway 259. The fee simple donation is close to 73 acres and consists mainly of wooded acreage. The second property (pictured right) is close to 77 acres and is being preserved with an FLC conservation easement. The tract consists of gneiss rock outcrops, natural forests, and open space. Of the 12 bird species observed during the site visit, two are recognized by the Appalachian Mountains Joint Venture, a coordinator of bird conservation plans, as priority species: the eastern towhee and the field sparrow. The field sparrow, also noted during the field survey, is considered to be common but in steep decline by the Partners in Flight program. Within 20 miles of the property are other preserved areas including Martin Lake, Weogufka State Forest, Yates Lake Wildlife Management Area, three easements held by other land trusts, and a 71 acre tract with an FLC easement. (Pictured clockwise on right - FLC staff observed this snail, along with other wildlife sightings, that included White-tailed deer, chipmunk, beaver, and crayfish. A creek flows through the southwestern portion of the property. FLC staff observed a Sweet betsy trillium close to bloom.)



Coosa County, AL | 150 acres



### **Etowah County, AL | 2 projects totaling 1,387 acres**

Situated along the Coosa River, these two contiguous and diverse properties consist of bottomland forest, agricultural fields, and wetlands. Between the two tracts wetlands comprise a total of 52 acres. The Middle Coosa River riparian area, in which these properties lie, is also considered a conservation target by the Nature Conservancy and will be benefited through the easements protections of its waterways. Both tracts have the high priority habitats of flood-plain forest and mesic hardwood forest, as designated by Alabama's State Wildlife Action Plan (SWAP). During a site visit, FLC staff noted over 155 species of plants on each tract. Staff also observed the Alabama Map Turtle, a Georgia state protected rare species.



Etowah County, AL | two projects totaling 1,386 acres - Image of Coosa Riv.

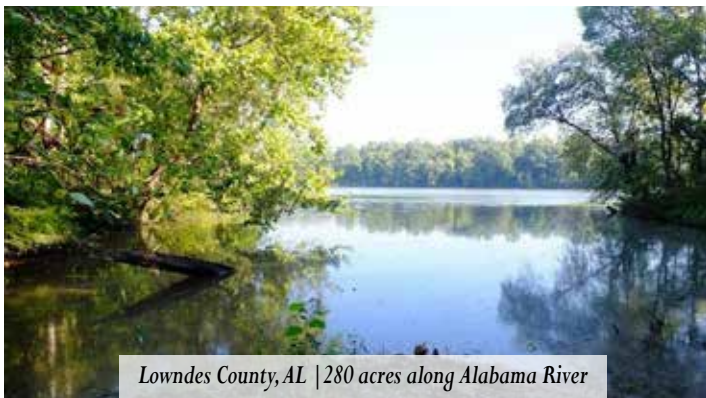
## ALABAMA cont...



*Jefferson County, AL | 27 acres*

### **Jefferson County, AL | 1 project totaling 27 acres**

This wooded tract of land includes creek frontage 1.5 miles upstream from the Cahaba River. The Cahaba River watershed is home to 135 species of fish, 35 species of snails, and 50 species of freshwater mussels, of which 69 are rare and imperiled species. The property's creek and the Cahaba River are part of the Mobile River Basin. The Mobile River Basin, and particularly the Mobile Delta, are home to hundreds of species of fish, crayfish, mussels, snails and other aquatic life, many of which are found nowhere else on earth. The property is also located within The Nature Conservancy's Upper Cahaba River Priority Conservation Area. The Cahaba River is also home to the Cahaba Lily, a federal species of concern.



*Lowndes County, AL | 280 acres along Alabama River*

### **Lowndes County, AL | 1 project totaling 280 acres**

This is an agricultural and wooded tract of land with river frontage along the Alabama River (pictured left). The property is adjacent to the State of Alabama's Lowndes Wildlife Management Area. The tract possesses certain ecological, natural, scenic, open space, and wildlife habitat values, such as bottomland forests, mesic forests, wetlands, river frontage, open agricultural fields, and open space. Birds noted on site during the site visit include Carolina chickadee, Carolina wren, downy woodpecker, eastern towhee, field sparrow, great blue heron, great egret, killdeer, belted kingfisher, red-bellied woodpecker, red-shouldered hawk, white-eyed vireo, and wood duck. Other wildlife noted were cloudless sulfur butterfly, gray tree frog, monarch butterfly, and white-tailed deer.



*Macon County, AL | 145 acres along Uphapee Creek*

### **Macon County, AL | 1 project totaling 145 acres**

A mostly wooded tract of land with creek frontage along Uphapee Creek (pictured left), this property lies a few miles downstream from the Tuskegee National Forest. The tract's water resources drain into Uphapee Creek, and downstream to the Tallapoosa River, resulting in diverse aquatic inputs to these watersheds. Uphapee Creek and the Tallapoosa River are priorities of the Alabama State Wildlife Action Plan and both are part of the Mobile River Basin.

### **Montgomery County, AL | 1 project totaling 147 acres**

The diverse landscape consists of swamp, floodplains, bottomland fields, and rich wetlands across a broad soil spectrum. These natural features provide numerous unique habitats in a suburban setting - ideal for diverse mammal species, breeding birds, and migrating songbirds. 10 bird species were heard or seen during a visit, including swamp sparrow, Carolina chickadees, and the eastern towhee. The eastern towhee is listed as a landbird species of moderate priority by the Appalachian Mountain Joint Venture, a coordinator of bird conservation plans.



*Montgomery County, AL | 147 acres*



*Tallapoosa County, AL | 124 acres*

### **Tallapoosa County, AL | 1 project totaling 124 acres**

This property is being preserved for the protection of natural Gneiss rock outcrops, forest habitat, remnant prairie, and riparian forests, water resources ideal for flora and fauna habitat, and eight bird species of conservation concern observed on the tract. During a site visit, FLC team determined the plant life to be diverse with a total of 156 plant species recorded. These include 80 species of grasses or forbs, 7 species of ferns, and 38 tree species. The property is located within the World Wildlife Fund's delineated Southern Rivers and Streams ecoregion, one of only 35 global ecoregions designated for potential protections.



## Project highlights from properties in Georgia!

*In 2018, the Foothills staff completed 7 land preservation projects and 1 land donation totaling 1,628 acres in the 8 counties of Catoosa, Elbert, Floyd, Jefferson, Lumpkin, Meriwether, Murray, and Taylor.*

### NORTH GEORGIA

#### 3 projects & 1 fee simple donation

**Floyd County** - Streams from this 164 acre property form a creek which then flows into the Coosa River. The tract is also near several park systems like Martin Lake, Coosa Park, Johns Mountain Wildlife Management Area (WMA),

Little River Canyon National Preserve, and Talladega National Forest. Two easements held by FLC total 1,309 acres are located within 5 miles of the property. There are also 28 conservation easements held by another land conservancy within a 10 mile radius.

**Lumpkin County** - This forested 458 acre property rises from the Chestatee River (pictured right) high onto steep slopes near Dahlonega. The tract nearly adjoins another 721 acre FLC protected property with both lands connected by the Chestatee River. Protection of the land not only preserves the ecology of the area but also the public's scenic views from the river and surrounding vicinity. This helps in maintaining the natural and rural character of the region that is well-known for tourism and recreation.

**Murray County** - (*not pictured*) Close to the Tennessee and Georgia border, this 115 acre former pine plantation is located in close proximity to the Cohutta WMA. Cohutta WMA is situated within the Chattahoochee National Forest, encompasses 96,503 acres of forestland, and is managed for deer, turkey, and small game.

**Catoosa County** - **FLC Fee Simple** (*not pictured*) - This 98 acre property, consists of both open pasture and woodland and is surrounded by large farms and rural residential areas.

### EAST GEORGIA - 2 projects

**Elbert County** - This 114 acre property is the site of a former quarry. It contains a large exposure of the Elberton Granite Deposit, also known as the Lexington-Oglesby Blue Granite Belt. The tract's natural habitats include Oak-Hickory-Pine Forest, Mesic Hardwood Forest, granite outcrops, and streams. The flat tops and ledges of the quarry along with thin soil areas around the quarry can be home to rare granitic species. Common species observed in this unique natural community were orangegrass, large-flower tickseed, and various granitic plants.

**Jefferson County** - The 123 acre property is composed of upland mixed pine-hardwood forests, mesic hardwood forests, forested wetlands, uncommon bluff forests, creek corridors, small pine plantations, and wildlife food plot fields. The tract adjoins four tracts of existing protected land totaling close to 567 acres and is proximal to a number of other protected lands.

### WEST GEORGIA - 2 projects

**Taylor County** - This diverse 360 acre property includes sandhills habitat, swamp, farmland, and seeps and also contains the state threatened Pickering's morning-glory (pictured lower right). This small white-flowered and unique morning glory holds its small narrow leaves upright. According to the Georgia Department of Natural Resources (DNR), fewer than 30 populations are known in the state. This tract also contains the state rare Bachman's Sparrow, which was heard on the property because of its unique song. This tract lies within close proximity of preserved private, state and federal lands including over 20 private conservation easements, the Georgia DNR's WMA, and the Chattahoochee Fall Line WMA.

**Meriwether County** (*Not Pictured*) - This 194 acre property mainly consists of forests, river frontage, pasture, and an historic cemetery. It is within close proximity of Joe Kurtz WMA and an existing conservation easement on the Flint River. The tract lies along a portion of the Oakfuskee Road, a road used by the Creek Indians as a trading path. It also lies along the Meriwether-Pike Scenic Byway, providing a 10 scenic greenspace for the byway.



Floyd County, GA | 164 acres



Lumpkin County, GA | 458 acres (Image of the Chestatee River.)



Elbert County, GA | 114 acres (Site of a former granite quarry.)

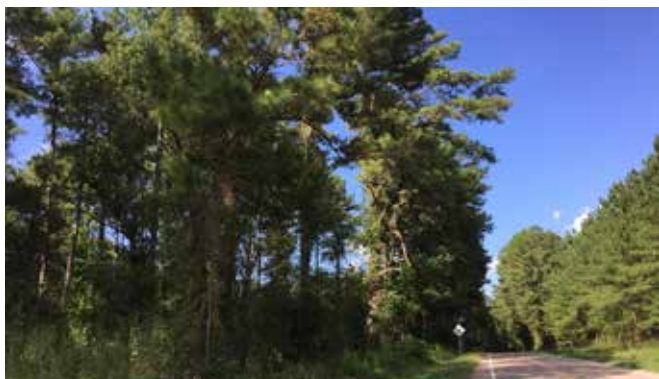


Jefferson County, GA | 123 acres (Tract is mainly forested.)



Taylor County, GA | 360 acres

# Project highlights from properties in North Carolina, South Carolina and Virginia!



Chatham County, NC | 112 acres (Property is close to other protected lands.)

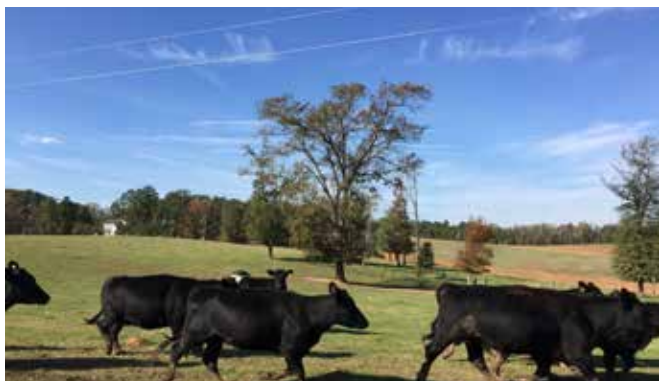
## NORTH CAROLINA

### – Chatham County

112 acres

This tract is being protected to preserve scenic open space, forest land, prime farmland

soils, and undeveloped lands in the Rocky River Watershed. This land is close to and just upstream from Tick Creek, which is known to have rare aquatic species that are dependent on water quality. The property adjoins a large tract of land protected by another land trust and is close to other protected lands including the Rocky River Subbasin Aquatic Habitat, Ore Hill Natural Area, Wood's Mill Bend Natural Area, and Rocky River Basalt Bluffs Registered Heritage Area.



Anderson County, SC | 95 acres (Former pine plantation is now a farm.)

## SOUTH CAROLINA -

### Anderson County &

### Richland County

210 Acres (2 projects)

**Anderson County** (95 acres) - A majority of this property is comprised of farm fields, with small forested areas and a small creek. The farmland is currently being used for raising cattle. The property runs along a state highway that is part of the Savannah River Scenic Byway. Much of the land used to be pine plantation owned by a paper company. About 12 years ago it was converted to pasture. The tract is within an area, considered by the American Farmland Trust, to be within the critical zone for lands having both high quality farmland and high development pressure.



Richland County, SC | 114 acres (View of the Broad River from property.)

**Richland County** (114 acres) - This property is located along the Broad River (pictured left), about ten miles from downtown Columbia, SC. The tract consists of open agricultural fields, currently producing soybeans, as well as forested areas. The property's forests are currently contiguous with those of nearby Harbison State Forest, making it highly likely that the wildlife species using those 2,000+ protected acres would benefit from the protection of the relatively natural habitat on the property as well. A species list compiled during a site visit included 24 tree species observed plus 60 other shrubs and herbs. Bird sightings included the belted kingfisher, green heron, red-tailed hawk, and pine warbler.

## VIRGINIA - Chesterfield County

471 Acres (2 projects)

Two adjacent properties totaling 471 acres have recently been preserved in Chesterfield County. They adjoin a 438 acre Virginia Department of Forestry Easement and a 207 acre conservation easement placed with FLC back in 2017. There is a Virginia Department of Conservation and Recreation Easement in close proximity. Easement restrictions will protect extensive wetlands and creeks on the property that flow into the Chesapeake Bay Watershed. Both properties are also being protected to preserve scenic open space, forest land, wetlands, and undeveloped lands. A bald eagle was noted flying over the trees during a staff site visit.



Chesterfield County, VA | 2 adjacent projects totaling 471 acres

# Save the Date!

## FLC's SUMMER CELEBRATION

### Saturday • August 24, 2019 • River View Family Farm

CASUAL DRESS | HORS D'OEUVRES | OPEN BAR



For sponsor/host participation or to purchase tickets contact Elise at [eeustace@foothillsland.org](mailto:eeustace@foothillsland.org) or 865-681-8326.

Corporate Sponsors & Individual Hosts receive event tickets and listings on:

Invitation • Day-of-Event Banner • Annual Report/Spring Newsletter • Website • August eNews

## A special thank you to FLC's 2018 Sponsors!



## A special thank you to FLC's 2018 Host Committee!

Honey & Lamar Alexander • Angie & Steve Arnett • Joan & Victor Ashe • Lucretia & Bill Atterson • Dan Barnett • Pauline & Charles Bayne • Marjorie & John Beasley • Janet & Tim Bigelow • Marty & David Black • Pat & Ernie Blankenship • Sharon Boyce & Jack Woodall • Sherry & Bob Browder • Rebecca Bryant • Priscilla & Jim Campbell • Vicki & Jeff Chapman • Terry A. Chervenak • Linda & Pete Claussen • Madge Cleveland • Mary Coffey & James Froula • Dr. Mary Cushman • Claudia Dean & Dan Feller • Nancy & Gary Dunavant • Judi & David Forkner • Rachel & Gerald Gibson • Dr. L. Barry Goss • Emily & Spencer Hall • Gail P. Harris • Christine 'Teenie' Hayworth • Robin Hill • Jenny Hines & Tom Jester • Frances & Jerry Hodge • Susan & J.T. Howell • Julia Huster & Robert Fletcher • Debbie & Dr. Craig Jarvis • Mary & Mark Jendrek • Susan Kincaid & Mike Parish • Ann & Mark King • India King & Addison West • Lucy & Philip Kirkham • Carol & Dr. Steve Krauss • Marion & William Lewis • Susan & David Long • Ronnie McKenzie • Lillian & Allen Meek • Karen & Billy Minser • Bonnie & Bob Morris • Robert D. Proffitt, MD • Sara Fortune Rose • Darlene & Ed St. Clair • Billy Stair • Mary Kay & Bill Sullivan • John Z.C. Thomas • Nancy & Bob Van Hook •

Kathy & John Wilbanks • Deb & Paul Willson • David Zandstra

# *A very special thank you to our Friends of the Foothills for all of your contributions, time, and talents in 2018!*

*Arranged alphabetically by an individual's last name or the business's first name.*

Charles & Donna Alexander  
Sen. Lamar & Honey Alexander  
Amazon Smile Program  
Fran Ansley & Jim Sessions  
Steve & Barbara Apking  
Steve & Angie Arnett  
Victor & Joan Ashe  
William & Lucretia Atterson  
Richard Baird  
Phillip & Cheryl Baker  
William & Margaret Baldauf  
Banff Mountain Film Festival  
Jean W. Bangham  
Dan Barnett  
Charles & Pauline Bayne  
Marin & Sue Beard  
John & Marjorie Beasley  
Rev. Robert & Martha Lee Beasley  
Bechtel National, Inc.  
Michael Beinenson  
Janis D. Berg  
Tim & Janet Bigelow  
Arville & Genois Billings  
David & Judith Birdwell  
Joy M. Bishop  
Iris Bissett  
Marty & David Black  
Linda Blanc & Marshall Petterson  
Ernie & Pat Blankenship  
Wayne Blasius  
Blount Gastroenterology Assoc.  
Blue Ridge Realty, Inc.  
Jim & Rhonda Bogard  
Mike J. Bohannon  
Bradley J. Bower  
Sharon Boyce & Jack Woodall  
Percy & Pauline Brewington  
Anne & George Bright  
Sherry & Bob Browder  
Michael S. Brown & Betty Evans  
Donna S. Brugh  
Rebecca Bryant  
Charles & Marion Burger  
Dr. Patrick & Fae Burkhart  
Burley Stabilization Corporation  
David & Debby Buuck  
John Byrd

Jim & Priscilla Campbell  
Campus Chest Program - UTK  
Bonnie Carroll  
Richard & Barbara Carter  
Sally Chaffin  
Jeff & Vicki Chapman  
Fred & Joyce Chattin  
Terry A. Chervenak  
Citizens Bank Of Blount County  
Clarence Brown Theatre  
Benjamin C. Clark Jr.  
Jay & Stacy Clark  
Pete & Linda Claussen  
Madge Cleveland  
Robert & Louise Collier  
Martha E. Cook  
Charles & Susan Corn  
Coulter & Justus Wealth Advisors  
Charles & Nancy Coutant  
John & Peggy Cowan  
Larry & Brenda Cox  
Dr. Mary F. Cushman  
Jean Davidson  
Joe & Ann Deatherage  
Ned & Claire Delozier  
Mary Lynn Dobson  
Edward Dorr & Marjorie Faeth  
John & Carolyn Drake  
Amy Russell Dudenbostel  
Gary & Nancy Dunavant  
Paul & Molly Durr  
Glenda & Darrell Eastridge  
Eco Terra  
Glenn M. Edwards  
Rem & Louise Edwards  
Allan & Donna Jean Ellstrom  
Energy Solutions  
Carter & Magda Eustace  
Dr. John & Janet Exton  
Walter & Lynne Fain  
Daniel Feller & Claudia Dean  
Marlene Fessick  
Craig & Nancy Fischer  
Jim Fitzgerald  
Tom & Marian Fitzgerald  
Robert J. Fletcher  
Ted Flickinger  
FMP Real Estate Services, Inc.  
David & Barbara Folsom

Anna & Tom Ford  
Judi & David Forker  
Marilyn Frank  
Alan, Mealka & Elsbeth Freeman  
James Froula & Mary Coffey  
Shella Ann Fuhrman  
Furrow Auction Company  
Sam & Ann Furrow  
Arthur & Nancy Garrett  
James A. Gerding  
Dr. Gerald & Rachel Gibson  
Robert Gibson  
Carole Gobert  
Karl E. Gombert  
Dr. L. Barry Goss  
Doris Gove  
John W. Gowan Jr.  
Gary & Carol Grametbauer  
David & Diane Gray  
Daniel Green  
Nina Gregg & Doug Gamble  
Dana & Nancy Griffin  
Billy & Sandra Grimm  
Douglas & Sally Gross  
Jessica Guinn  
Celia M. Gulbenk  
William & Ann Hackworth  
Melvyn & Edith Halbert  
Meredith Louise Hale  
Bill & Kathy Hall  
Spencer & Emily Hall  
Christine Hamilton  
Loretta Harber  
Nancy E. Hardin  
Patrick & Julie Hardin  
Gary Harmon  
Gail P. Harris  
Christine 'Tennie' Hayworth  
Julie Hembree  
Richard & Lucy Henighan  
Winifred Hepler  
Hickory Construction  
David Higgins  
Robin Hill  
Richard & Jeanie Hilten  
Hines & Company, PC  
Jenny Hines & Tom Jester  
Norman E. Hinkle  
Jerry & Frances Hodge

Angela Hoffman & Seth McConchie  
Paul & Bonnie Holmes  
Audrine Honey  
James & Teresa Horn  
Karen Houck  
John Howanitz  
J.T. & Susan Howell  
Dr. Rocio Huet  
Leigha Humphries  
Dan Hurst  
Dr. Robert W. Hutson  
Information International Assoc.  
Dr. Craig & Debbie Jarvis  
Mark & Mary Jendrek  
Wilma Jordan  
Joel & Nancy Justin  
Dale & Mary Kangas  
Ellen C. Keith  
Matthew Kelleher, Jr.  
Don & Sandy Kilgore  
King Brothers Farm  
Mark & Ann King  
Charlene 'Chuckie' Kirby  
Philip & Lucy Kirkham  
Mark D. Kirkpatrick  
Charles E. Klabunde Trust  
Frank & Janet Kornegay  
Roy Kramer  
Manfred O. Krause  
Dr. Stephen & Carol Krauss  
Kroger Community Rewards  
George Laggis  
Michael & Carlene Lecompte  
David & Judith Lee  
Sherri Parker Lee  
Leidos  
Charles & Annette Levin  
Marion & William Lewis  
Magdalene P. Liles  
David & Susan Long  
Long, Ragsdale & Waters, PC  
Richard & Evelyn Lorenz  
William J. Lukosavich  
Stephen Mallett & Susan Savage  
Maple Hall (Knoxville)  
Brent & Nancy Martin  
Evelyn Martin  
Mast General Store  
Lenny & Wilma Mattingly  
Donald Mauer  
Alice & Allen McCallie  
14 Gordon & Gay McCammon

William & Pattie McCulley  
Chris & Gladys McDonnell  
Steven McGaffin  
Ronald E. McKenzie  
Janet McKinley  
Allen & Lillian Meek  
Keith & Janie Mertz  
Paul & Emily Miller  
Doug Mills (Celebration Photographer)  
Jay & Jennifer Mills  
Jack Milne  
Billy & Karen Minser  
Phillip W. Moffitt  
Keith & Rita Moore  
Bob & Bonnie Morris  
Terry W. Morton  
William W. Murphy  
Kathy L. Newman & Bob Durham  
Nine Lakes Wine Festival  
John H. Noel  
Norris Women's Club  
Matthew & Amy Nuckols  
Frances Oates  
Ellen Oblow  
Harry & Amy Ogden  
ORAU  
Andy Page  
Mike Parish & Susan Kincaid  
Larry & JoAnn Parker  
Fred Pasteur  
Patriot Investment Management  
Robert & Sylvia Lynn Peery  
Karen Petrey  
Kenneth G. Picha  
Pilot Flying J.  
Burke & Lezah Pinnell  
John & Martha Pittenger  
Dennis E. Poland  
Claudio & Mary Katherine Polo  
Steve Polte  
Randall & Kathleen Pope  
Drs. Laura Powers & John Burkhart  
Sarah Prince  
Larry & Carolyn Proctor  
John Proffitt  
Robert D. Proffitt, M.D.  
Pro2Serve  
Honorable Bob & Margo Ramsey  
Dr. John & Nancy Ray  
Pamela Reddoch  
Retirement Planning Services, LLC  
Marjorie Richardson

Jennifer Lynn Richter  
Joan Riedl  
Natalea Riley  
RiverView Family Farm  
Bill & Shelly Robinson  
Ryan Robinson  
Chuck Roe  
Dr. Gary & Karyn Rolfe  
Sara Fortune Rose  
Sarah J. Rule  
Edward & Darlene St. Clair  
Jeff & Melissa Sanders  
William H. Savell, Jr. DDS  
Royce & Ann Sayer  
Peter Scheffler  
Paul A. Schmalzer  
Dr. William & Rebecca Schneider  
Bill Scroggins  
Raymond Sellers  
John & Rebecca Sewell  
Arthur G. Seymour  
David & Judy Shiflett  
David & Teresa Shupp  
William & Muriel Sirett  
Jack & Joanne Sites  
Joseph & Kimberly Skalski  
Marvin & Wilda Smith  
Robert & Betsy Smith  
Smoky Mountains Hiking Club  
Dr. Alan Solomon  
Cindy Spangler  
Roy Spears  
Billy C. Stair  
Strata-G, LLC  
Morgan Strissel  
Ben & Bonny Kate Sugg  
Bill & Mary Kay Sullivan  
R.B. & Liz Summitt  
Marjorie Swenson  
Paul & Barbara Taylor  
Sharon Templeton  
Gary & Lois Thacker  
The Trust Company of Tennessee  
Gordon & Nancy Thomas  
John Z. C. Thomas  
Lois Thomas  
Nathan Thomas  
John & June Thompson  
Gerald Thornton  
James S. Tipton, Jr.  
Randy & Louise Trudell  
Don & Kathy Trundle

**Frank & Judy Turner**  
**Peggy Turner**  
**UCOR - URS/CH2M Oak Ridge LLC**  
**UT-Battelle**  
**Mark Van Hook**  
**Robert & Nancy Van Hook**  
**Stuart VanMeter, M.D.**  
**Gary & Linda Walker**  
**Mildred K. Wallace**  
**Rick Watwood**  
**Melissa Wauford**  
**Glen D. Weber**  
**Stephen & Carol Weber**  
**Moirra Wedekind**  
**Martha Weeks**  
**Sarah J. Weeks**  
**Donald Weisbaker**  
**George Addison West, Jr.**  
**John & Debby White**  
**Robert & Sheila White**  
**Myron Whitley**  
**Terry M. Whitt**  
**Jacqueline Whittemore**  
**John & Kathy Wilbanks**  
**Martha Williams**  
**Craig Williamson & Patricia Scofield**  
**Paul & Deb Willson**  
**George & Susan Wilson**  
**Nathan K. Woods**  
**Ralph & Karen Wynn**  
**Dr. Mary Sue Younger**  
**David Zandstra**

#### **‘IN MEMORY OF’ TRIBUTES**

**Linda P. Brown**  
 (by Robert & Nancy Van Hook)  
**Randy Brown**  
 (by Alice & Allen McCallie)  
**John Wesley Clabough, Jr.**  
 (by FLC Board & Staff)

**Carl & Noma Eustace**  
 (by Carter & Magda Eustace)  
**William G. Harris (1766)**  
 (by George Addison West)  
**Charles E. Klabunde**  
 (by the Charles E. Klabunde Trust)  
**Jim E. Long**  
 (by Jeff & Melissa Sanders)  
**Sandra Dean Long**  
 (by Cindy Spangler)  
**Maureen Brown Lucas**  
 (Hugh Williamson & Family)  
**Erma F. Martin**  
 (by Evelyn L. Martin)  
**Geneva McArthur**  
 (By Bill Hackworth)  
 (by the Stephen Mallett)  
 (by William & Pattie McCulley)  
**Dr. Arvin S. Quist**  
 (by Robert & Nancy Van Hook)  
**John Logan Rose, III (Jack Rose)**  
 (by Donna Brugh)  
 (by Loretta Harber)  
 (by Will Hubbard)  
 (by Sara Fortune Rose)  
 (by Sarah J. Weeks)  
**Garland & Nell St. Clair**  
 (by Robin Hill)  
 (by Ed & Darlene St. Clair)  
**Betty Scofield**  
 (by Craig Williamson & Patricia Scofield)  
**Mildred J. Scott**  
 (by Dana & Nancy Griffin)  
**Frank Malcolm Stribling**  
 (by Iris Bissett)  
 (by Coulter & Justus Wealth Advisors)  
 (by Joe & Ann Deatherage)  
 (by Norris Women's Club)  
 (by Frances H. Oates)  
 (by Ruth, Stephen & Helen Rindsberg)  
 (by Peter Scheffler)

**JoAnn Thompson**  
 (by John & Debby White)  
**Donald Greer Walker**  
 (by Joy M. Bishop)  
**Felder S. Weeks**  
 (by Martha Weeks)  
**Frederica Williamson**  
 (by Craig Williamson & Patricia Scofield)  
**BEQUEST**  
**Maureen Brown Lucas**  
 (Hugh Williamson & Family)  
**‘IN HONOR OF’ TRIBUTES**  
**Steve Arnett**  
 (by Anna & Tom Ford)  
**Ernie Blankenship**  
 (by Benjamin C. Clark, Jr.)  
**Robby & Emily DeLozier**  
 (by Martha Williams)  
**Tom & Marian Fitzgerald**  
 (by Jim Fitzgerald)  
**Dan Fortune**  
 (by Donna Brugh)  
**William Douglas Goode, Jr.**  
 (by Mary Katherine Polo)  
**David Higgins**  
 (by Sarah Prince)  
**Kim Kasten & Ranaye Dreier**  
 (by Mildred K. Wallace)  
**Robert J. Lowe**  
 (by Robert E. Gibson)  
**Sara Fortune Rose**  
 (by Sherri Parker Lee)  
**Joe Stewardson & Jennifer**  
 (by Raymond Sellers)  
**Marsey Williams**  
 (by Ned Delozier)  
**Amos & Etta Wilson**  
 (by Dana & Nancy Griffin)

## **Become a Friend of the Foothills!**

Thanks to the ongoing and generous support of our Friends, FLC continues to expand our land conservation programs throughout the diverse and beautiful Southern Appalachian region.

Foothills gladly accepts any and all donations - no gift is too small!

Foothills is a 501(c)(3) non-profit and does not receive any financial support from federal, state, or local government. FLC relies on individual and corporate contributions to sustain our organization, land acquisition, and stewardship programs.

**To become a member or to renew your annual contribution please utilize the envelope in this newsletter or visit the ‘Donate Now’ link at [www.foothillsland.org](http://www.foothillsland.org).**

**Please contact the FLC office at (865) 681-8326 if there are other ways you prefer to support the organization.**





3402 Andy Harris Road  
Rockford, TN 37853

NON PROFIT  
U.S. POSTAGE PAID  
Maryville, TN  
Permit No. 9

Address Service Requested



*Image looking out from a 948 acre preserved property into Sequatchie Valley in Rhea County, TN.*

## CONNECT TO FOOTHILLS

**[www.foothillsland.org](http://www.foothillsland.org)**

\*Sign up for our monthly eNews

\*Make an online donation

\*View a short video about FLC

**Facebook**

(Foothills Land Conservancy)

**Twitter**

(FriendsatFLC)

**Call FLC's Office**

To request a presentation for your  
club, organization or group  
(865-681-8326)

---

## SAVE THE DATES!

**June 1, 2019- Land Trust Day**

**Mast General Store - Knoxville**

A portion of store proceeds will go to  
FLC's conservation programs that day!

**August 24, 2019 - FLC's  
Summer Celebration**

**Located at: RiverView Family Farm**